

# *JOHN OLIVER SECONDARY*



BY GROUP A-1



# Dimensions

Dimensions:

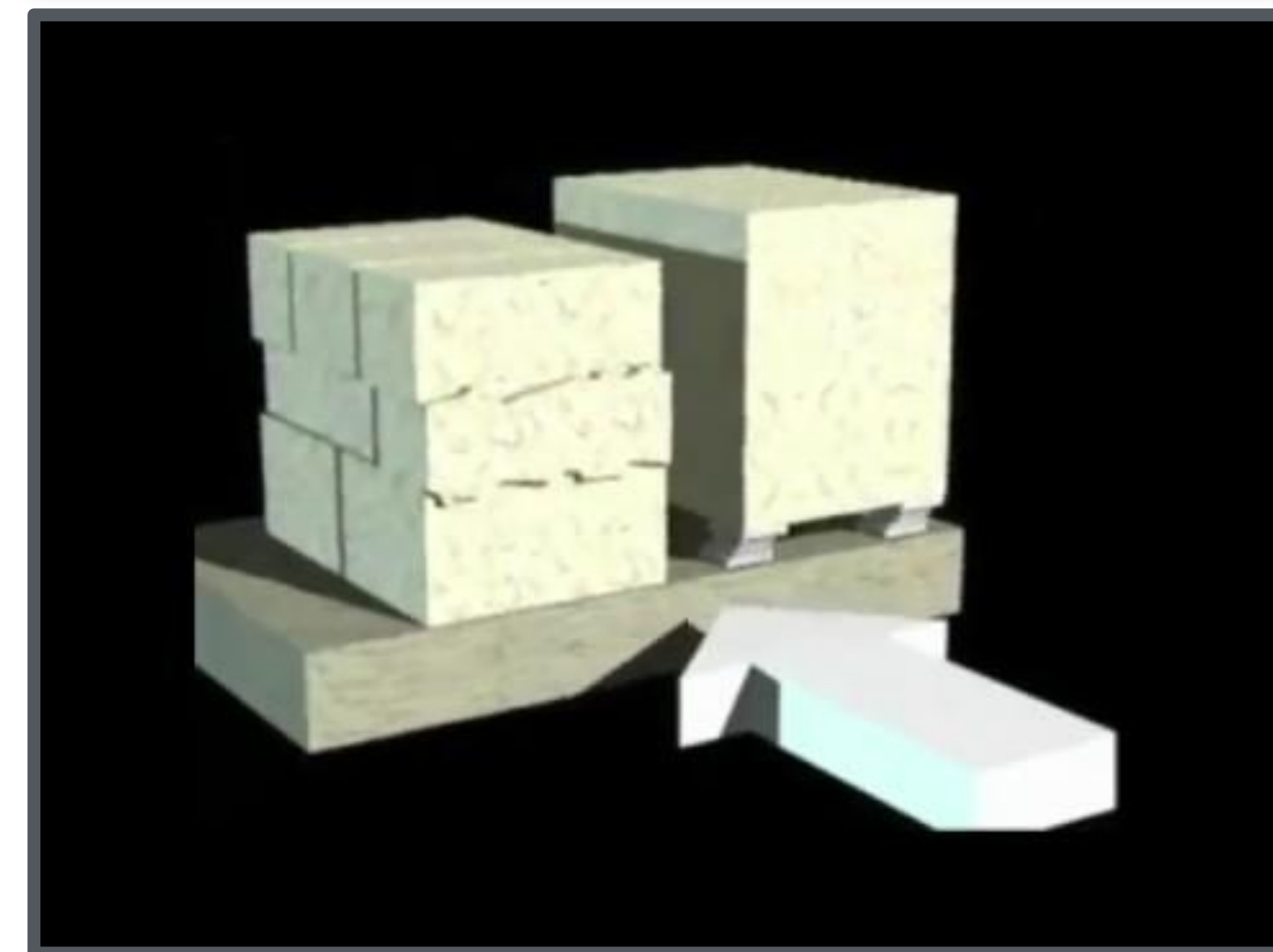
- Our current property dimension is 280 meters by 200 meters. According to this ratio the digital model as well as the real life model, is to scale
- The average classroom size is 8 meters by 10 meters



# *Seismic Adaptations*

## **EXTERIOR:**

- Base Isolation System
- Flexible Materials:
  - Cement (Polyurethane)
  - Lead Rubber Bearings
- Triple-paned windows (Laminated Glass)
- Deep Foundation



# *Seismic Adaptations*

## **INTERIOR:**

- Elevator with earthquake detection system
- Refuge areas
- Earthquake safety kits
- Emergency lights
- Triple plane Earthquake proof windows



# *Sustainability Elements*

- Solar Panels
  - 22% efficiency
- Low flow toilets
- Led lights
- Hydronic heat system



# Safety

## Safety requirements

- 30 people per class max
- Fire escapes and exits
- Accessibility for handicapped and disabled persons
- Fire alarm locations
- Fire extinguishers
- AED Locations
- Naloxone kit
- Heating outside of the school so that the snow melts (like in Calgary)

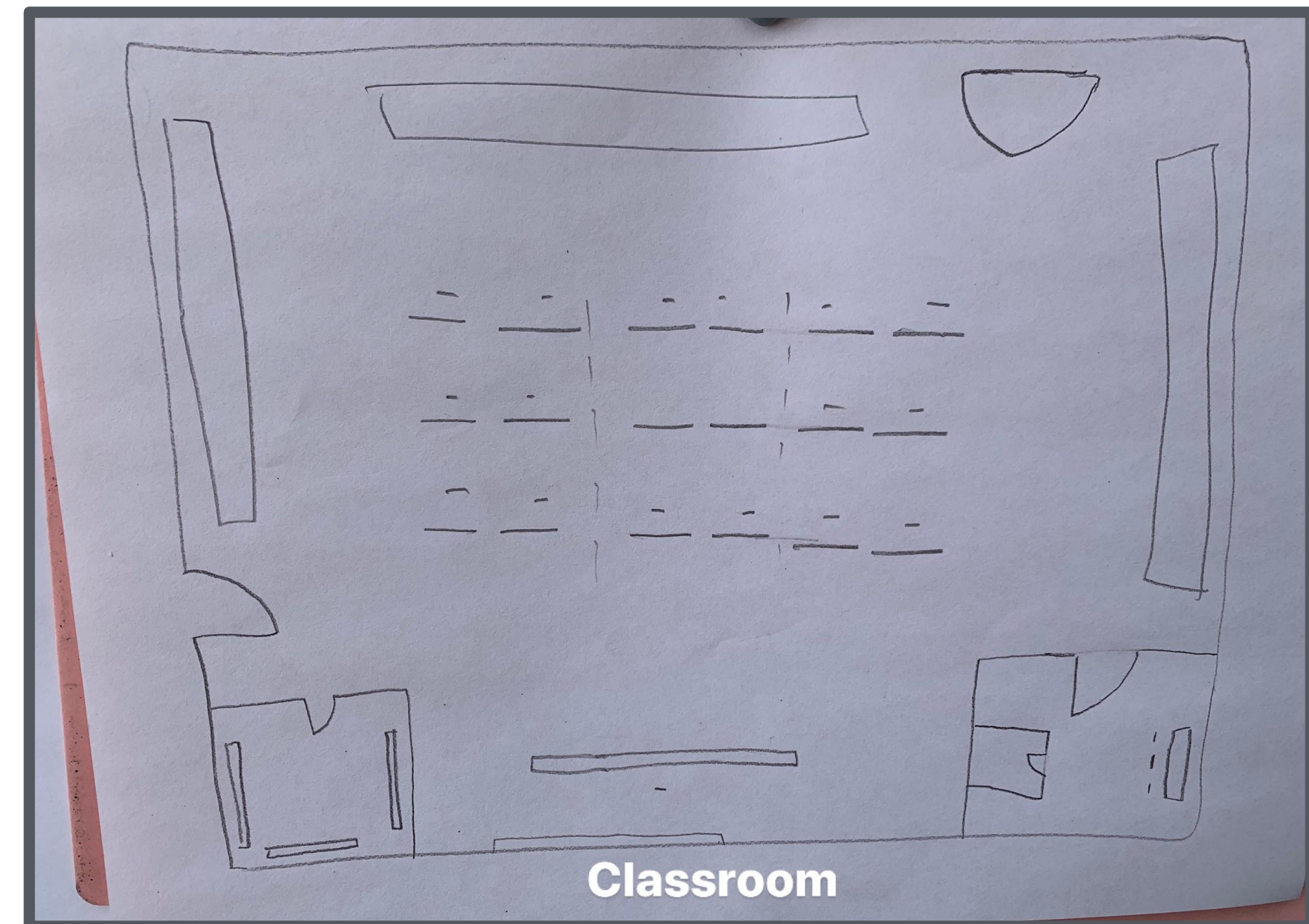


# *Different Rooms Around the Building*

# *Classrooms*

## **Basic class rooms amenities:**

- Desks to seat 30 kids
- Sinks in every class
- Closet space
- Projection space





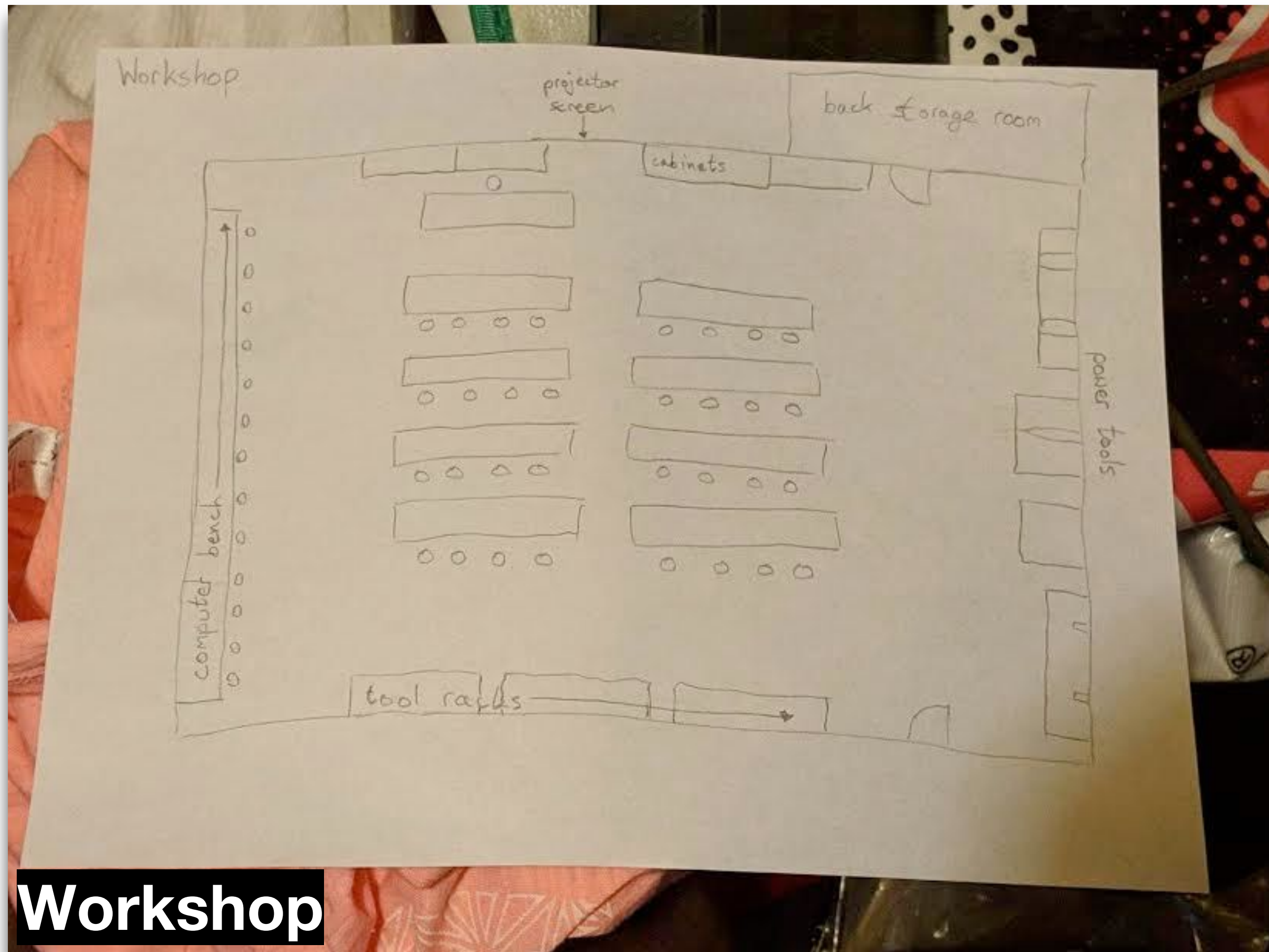
# Library



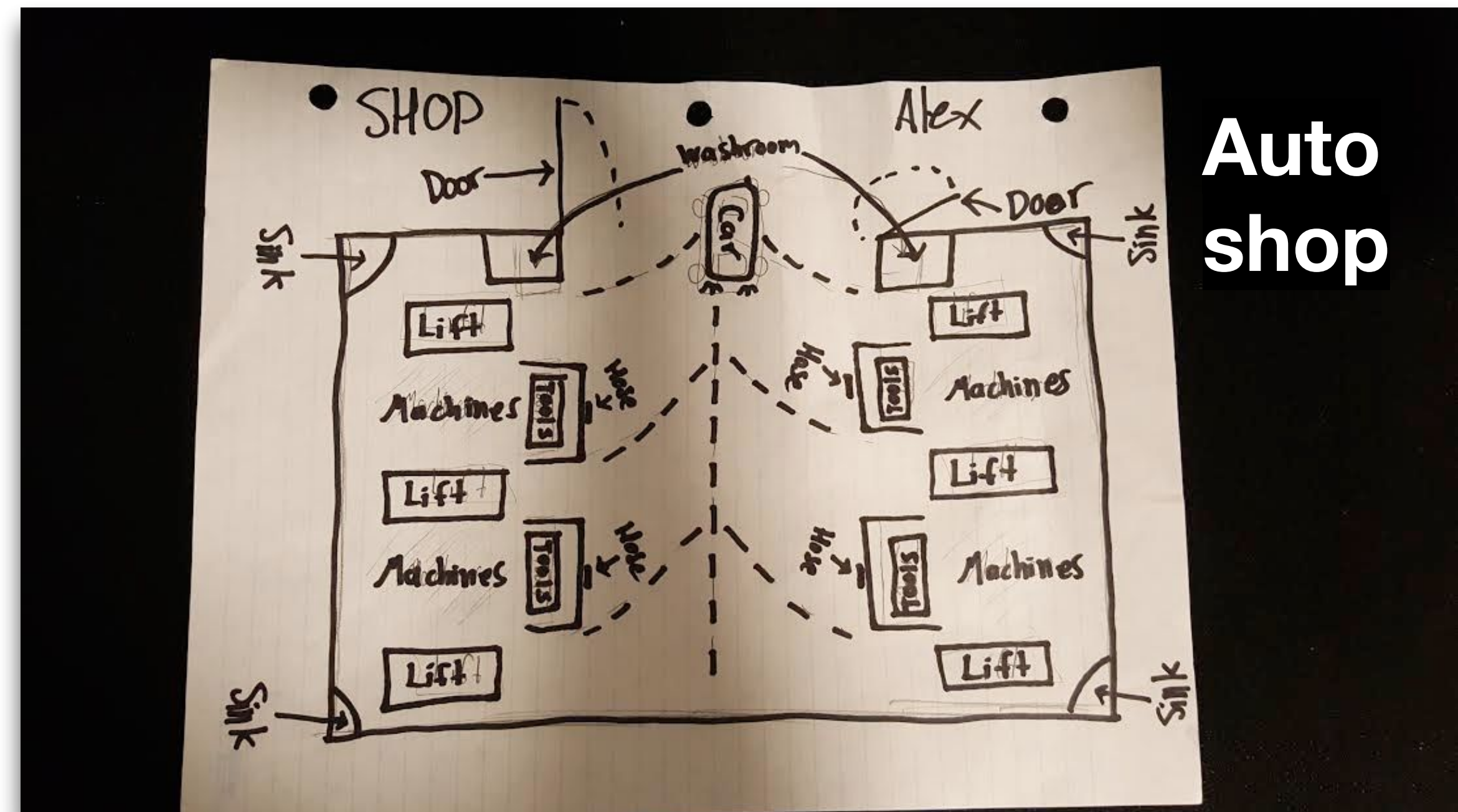
## Library details



# Shops



**Workshop**

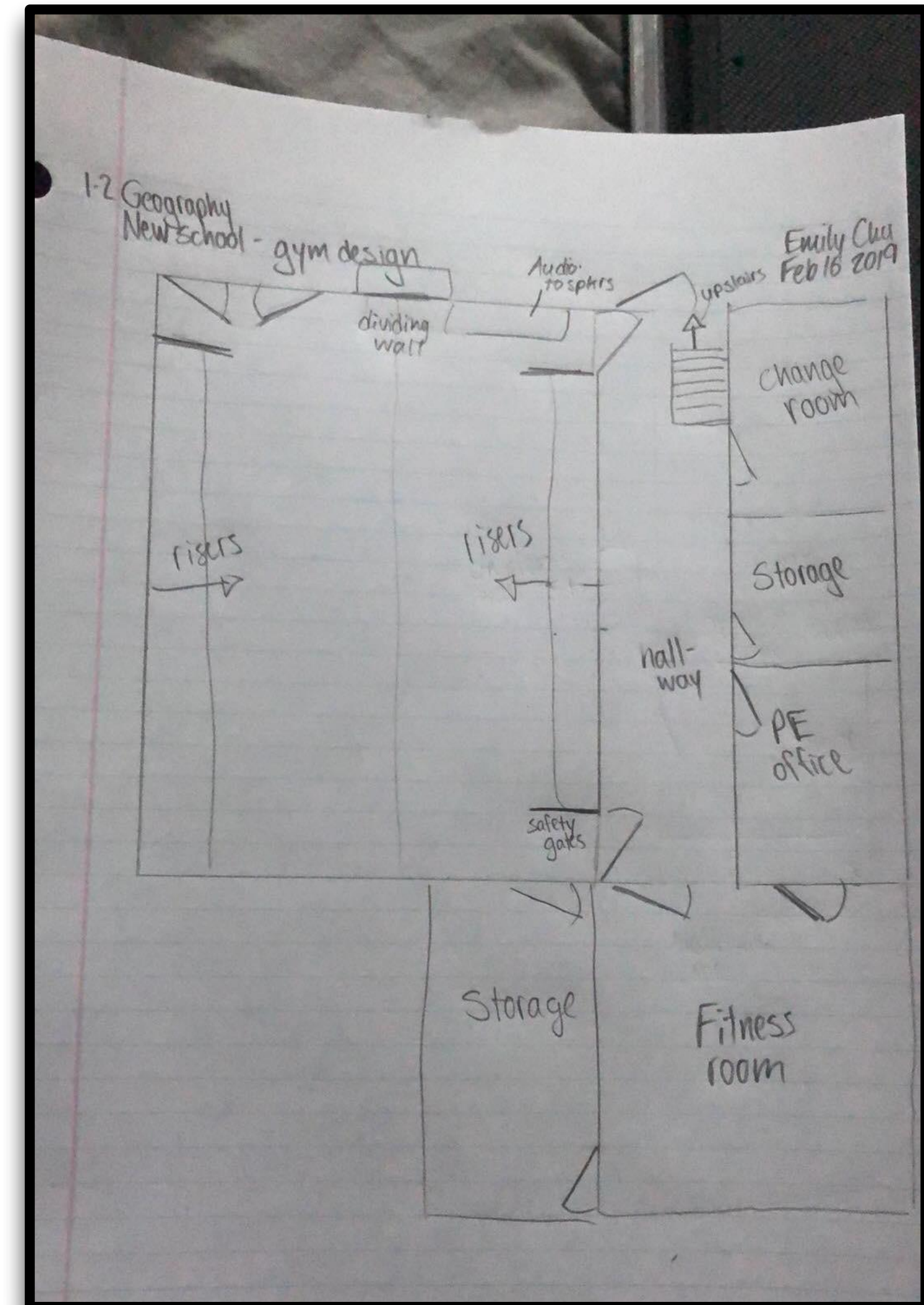


**Auto shop**

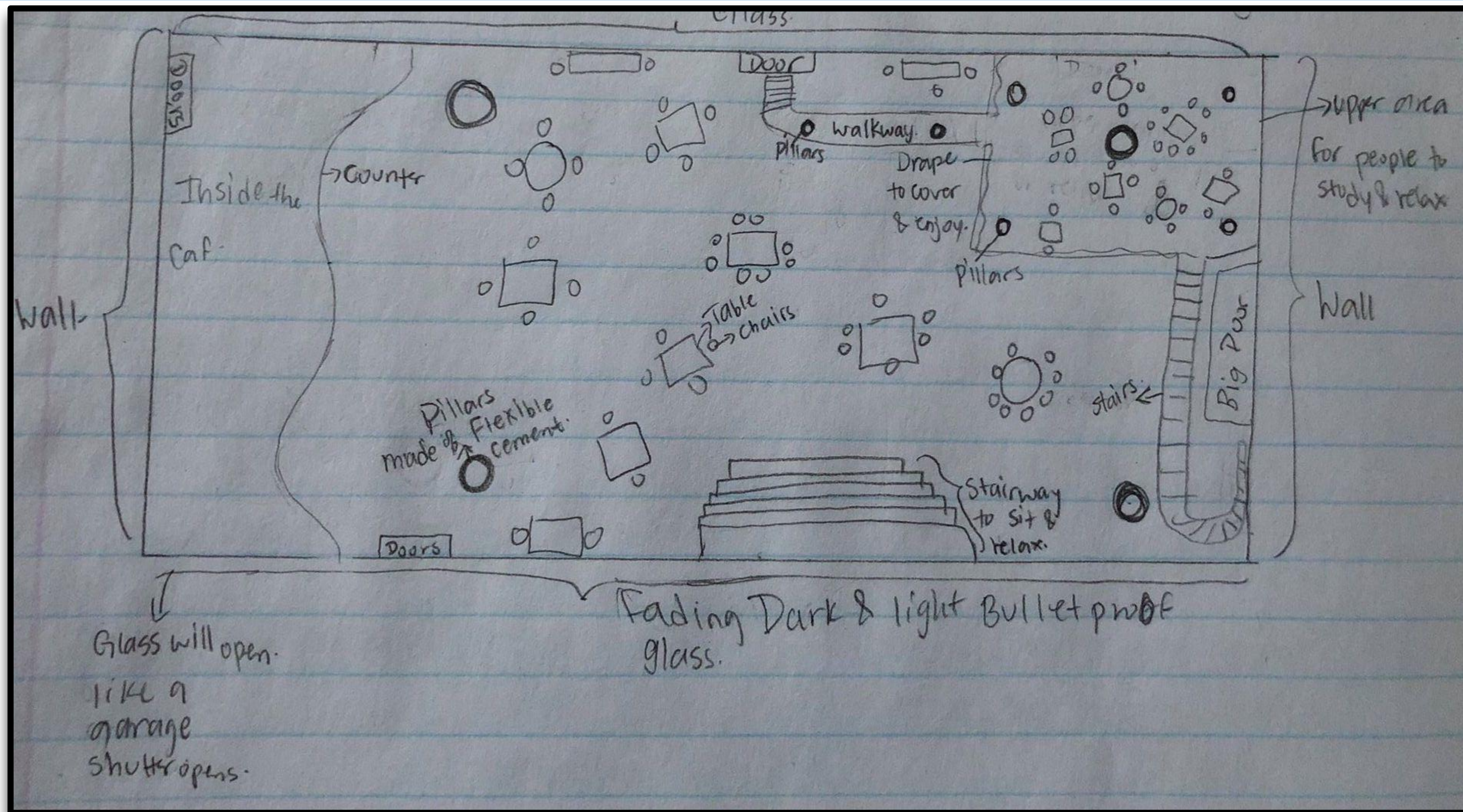
# Gym

## Gym amenities

- Safe, comfortable collapsible risers
- Built in LED score board
- Bluetooth and wired connection for audio
- Dividing walls and curtains
- Change rooms with lockers, benches, showers, massage tables and water stations
- Washrooms
- Offices
- Weightroom



# Cafeteria



# Bathrooms

## Bathroom amenities

- Mirrors
- Dyson hand dryers
- Urinal dividers
- Lockable stalls with handicap stall
- Bidet
- Smoke/Vapour Detectors



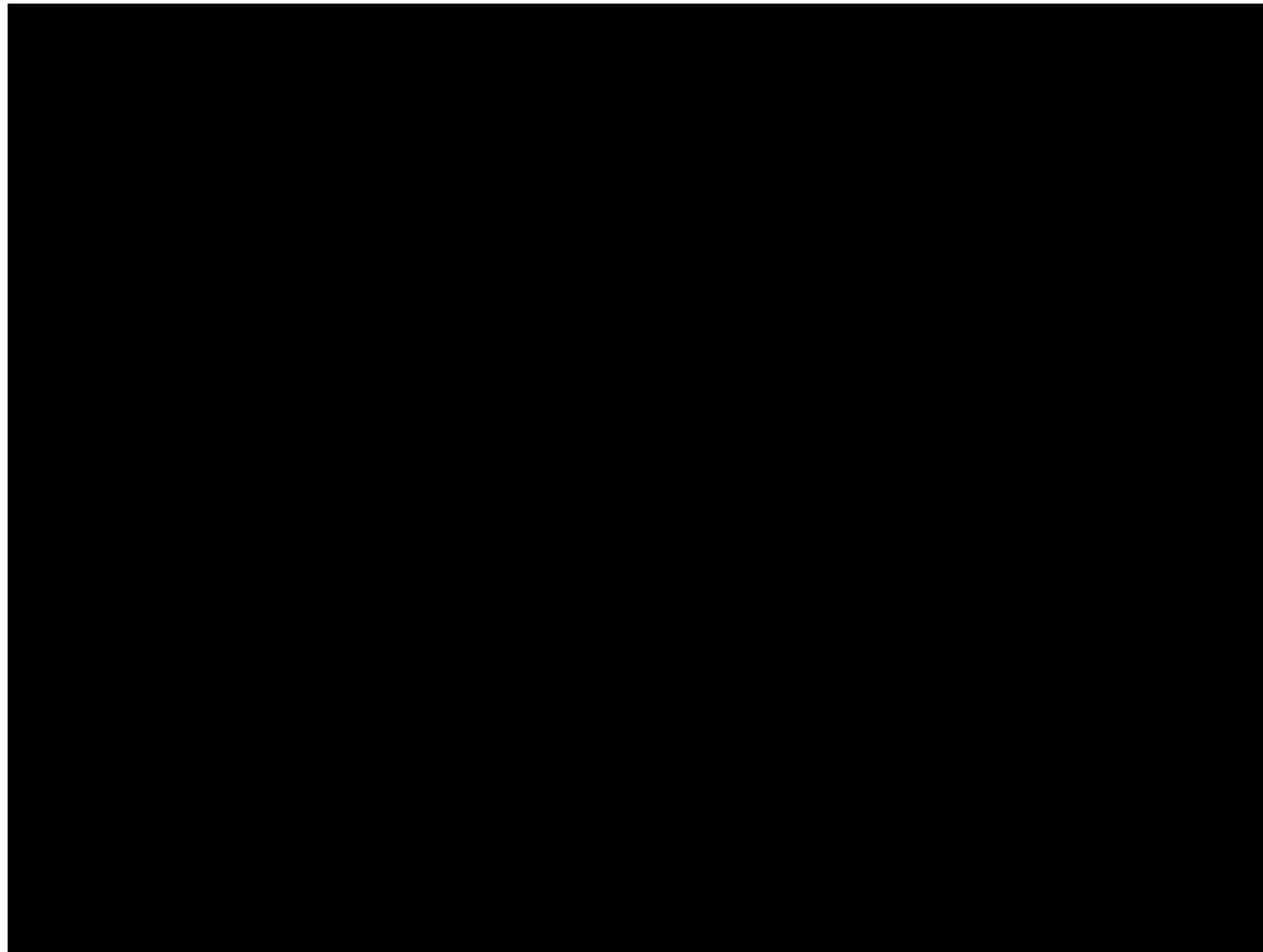
# *Science Class*

## **Basic science class room amenities**

- Closet space
- Gas and sinks
- Eyewash station
- Supplies
- Projection space

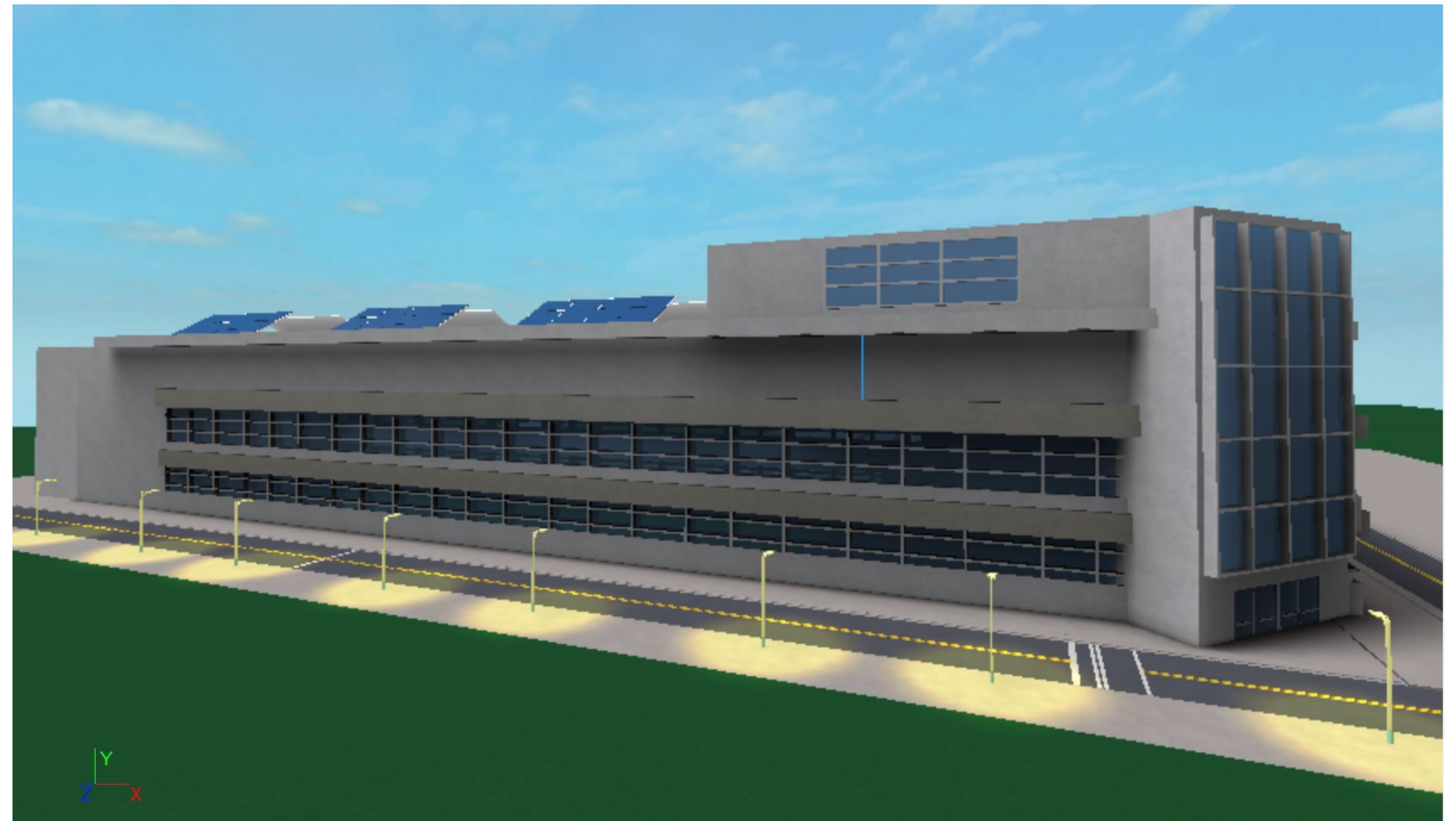
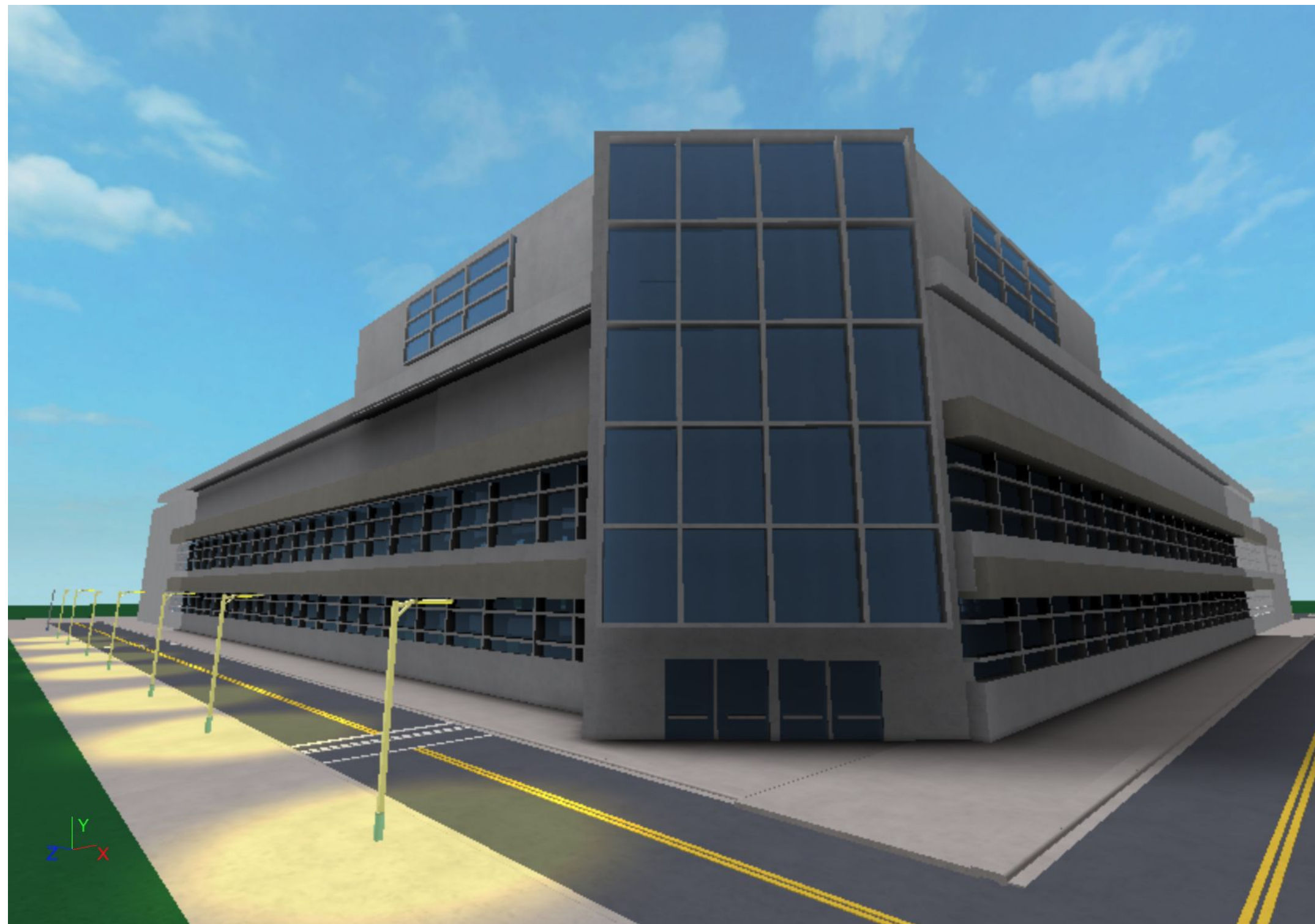


# *Blueprint*



# *3D Digital Model*

## **South West Main Entrance and West Side**





# *3D Digital Model*

## **South Side and South East Corner Parking Lot**



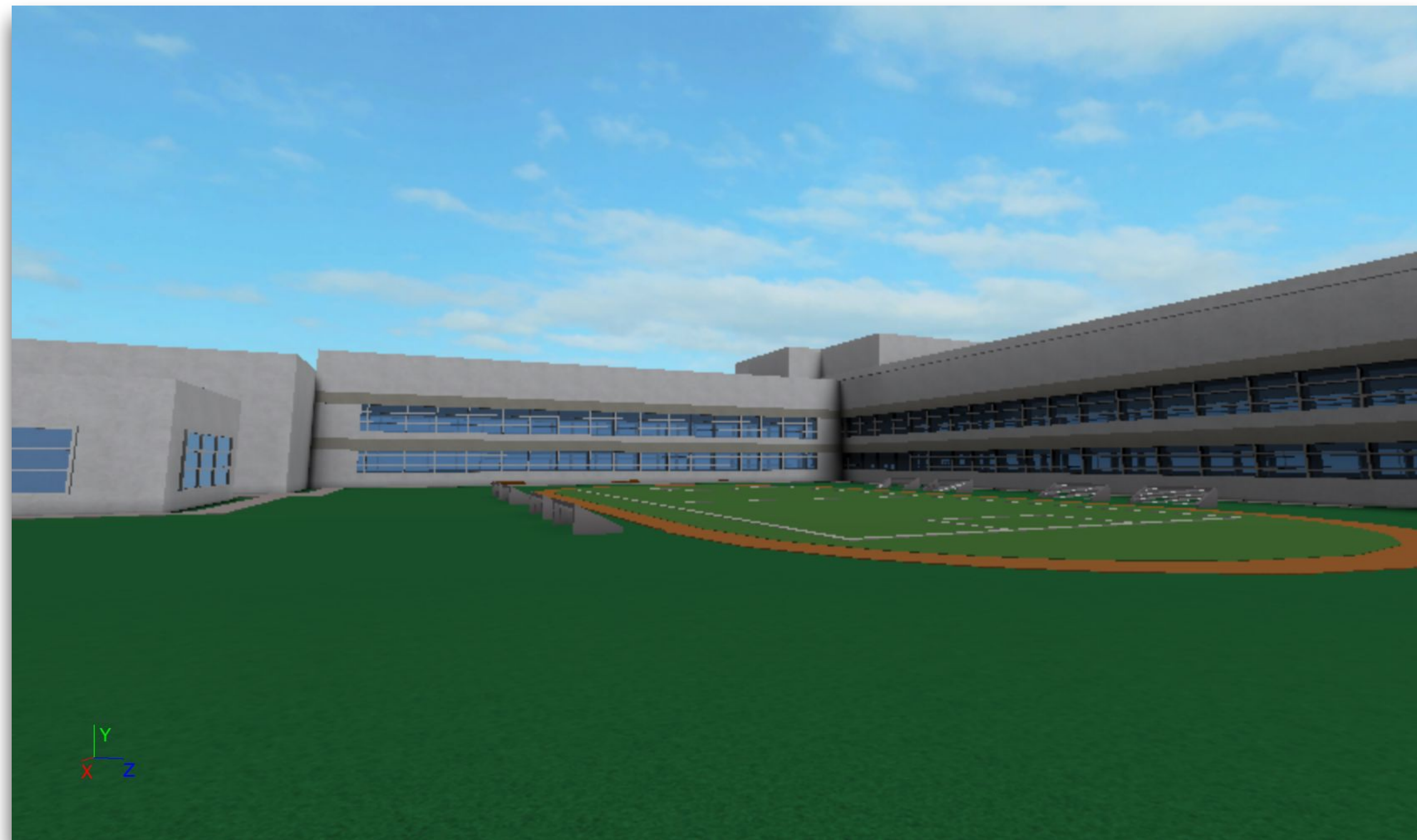
# *3D Digital Model*

## **North View of Field**



# *3D Digital Model*

## **POV of Field and North East Parking Lot**



# *3D Digital Model*

## **Birds Eye View**



# ***Digital Imaging Software***

# *BIBLIOGRAPHY*

<https://smarterhouse.org/heating-systems/types-heating-systems>

<https://www.bchydro.com/powersmart/residential/building-and-renovating/switch-to-solar-energy.html>

[https://www.google.com/maps?q=john+oliver+secondary+school+map&um=1&ie=UTF-8&sa=X&ved=0ahUKEwiz5t3frdrgAhUBx58KHVxpAAMQ\\_AUIDigB](https://www.google.com/maps?q=john+oliver+secondary+school+map&um=1&ie=UTF-8&sa=X&ved=0ahUKEwiz5t3frdrgAhUBx58KHVxpAAMQ_AUIDigB)

[https://www.bridgestone.com/products/diversified/antiseismic\\_rubber/product.html](https://www.bridgestone.com/products/diversified/antiseismic_rubber/product.html)

<https://www.hammerglass.com/>